

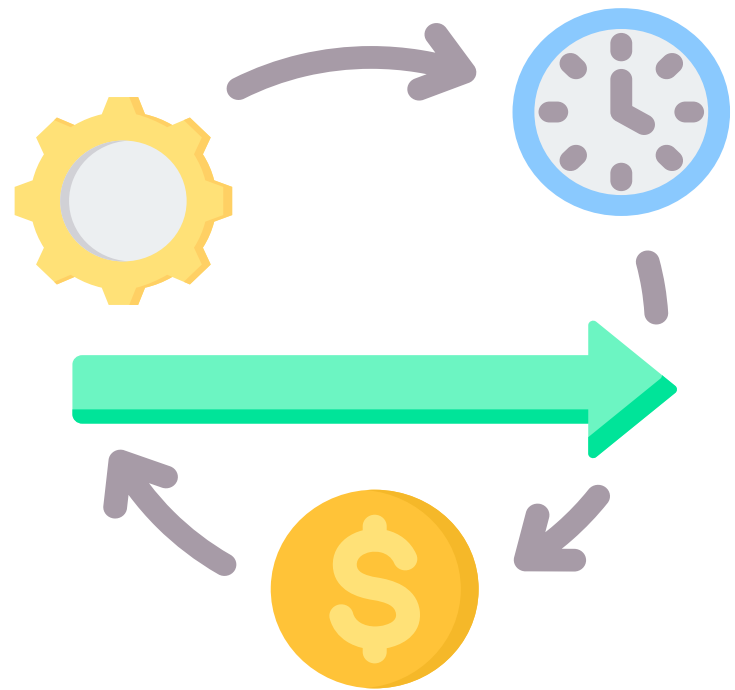
A photograph of a modern campus building at sunset, with a large blue diagonal overlay on the left side. The scene includes a paved plaza with large rocks and trees in the foreground, and a multi-story brick building with large windows in the background. The sky is filled with soft, golden light from the setting sun.

# Educating for Careers Adapting to Change

**ACT**<sup>®</sup>

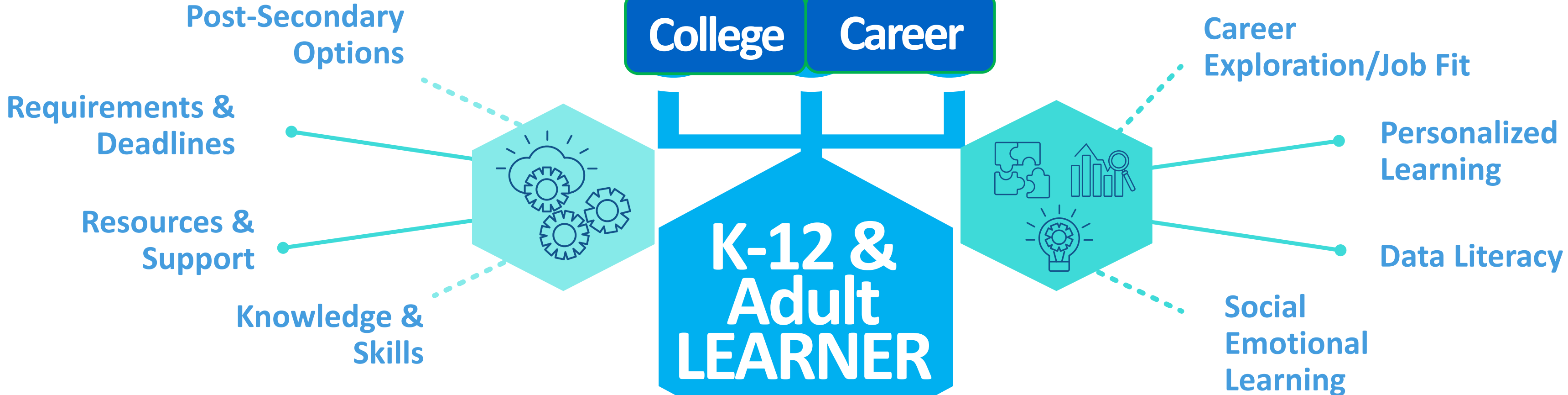
Growth Through Partnership

# Foundational Workplace Concepts for Middle School Students



- **Maintaining Alignment to Academic Core**
- **Enhancing Career Exploration**
  - **Maximizing Use of Open Resources**
  - **Contextualizing Work Readiness**

**College** **Career**



**THE WHAT**

**Crucial Information**

English  
 Math  
 Science

Reading  
 Writing

**Navigation Tools**

**STEM, SEL, & essential workplace skills**

**THE HOW**

**Integrated & Multiformat Portfolio**

**ACT**<sup>®</sup>

# CONNECTED ASSESSMENTS

for College and Career Readiness

## Crucial Knowledge & Skills

Academic

Workplace

Social  
Emotional

## Assessments – Curriculum – Professional Learning

ACT<sup>®</sup> Pre-ACT<sup>®</sup>  
Pre-ACT<sup>®</sup> 8/9

ACT<sup>®</sup> WorkKeys<sup>®</sup> Assessments  
ACT<sup>®</sup> WorkKeys<sup>®</sup> Curriculum

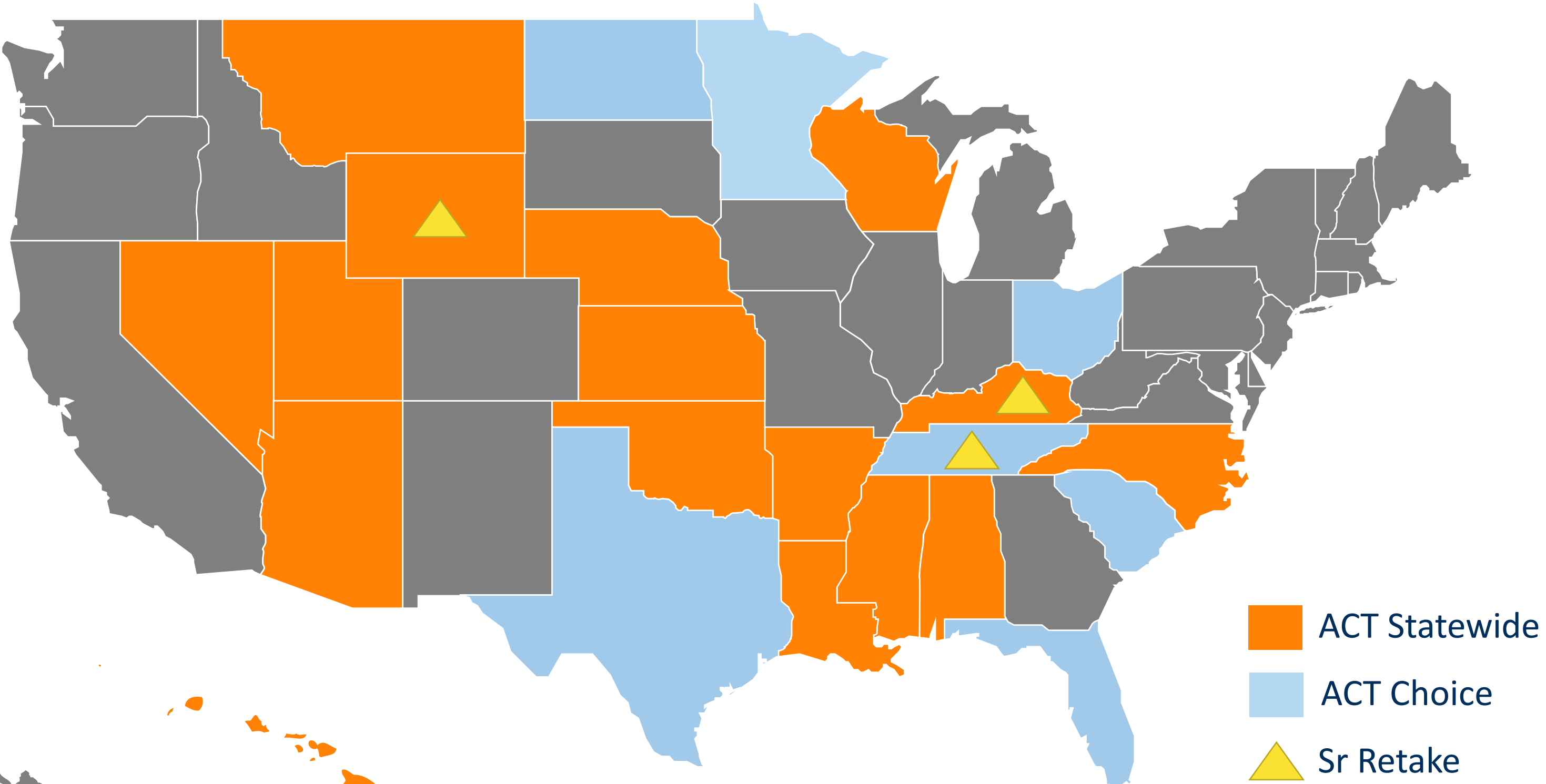
 Mosaic<sup>™</sup> by ACT<sup>®</sup>  
Social Emotional Learning

- Online Reporting
  - Digital Badging
- Approved Indicators  
for CA Charter Schools

- Test Prep for Free and Purchase
- Work Certifications

- Job Profiling
- K12 SEL Solution

# 2022-23 ACT Statewide Testing – Statewide/Choice/Retake: 23 States





# How are most colleges using ACT scores?

Test Scores Still Matter

## ✓ Course placement after enrollment



ACT English 22 or Higher	Enroll in GE English Course
ACT Math 23 or Above	Enroll in GE Math Course

For those not having a 3 or higher on AP test



As an alternative for eligibility requirements or for course placement

## ✓ Test Optional Application

Holistic Review of All Candidates



Applicants Self-Report ACT Test Scores

Applicants asked to indicate if they plan to submit scores.



USC will wait to receive scores



# A Measure of College Readiness

Subject	ACT Benchmark
English	18
Math	22
Reading	22
Science	23
ELA	20
STEM	26

Find out your predicted scores at

**My ACT.org**

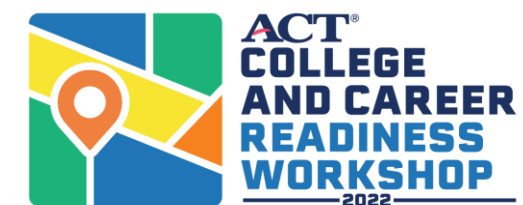
If your score is above or equal to the ACT Benchmark, you have

- a 50% chance of earning a B or higher, or
- a 75% chance of earning a C or higher

in first-year college courses.

## ACT Benchmark Scores

- Widely used as a measure of postsecondary academic readiness for college course placement,
- Help meet many local and national scholarship criteria.

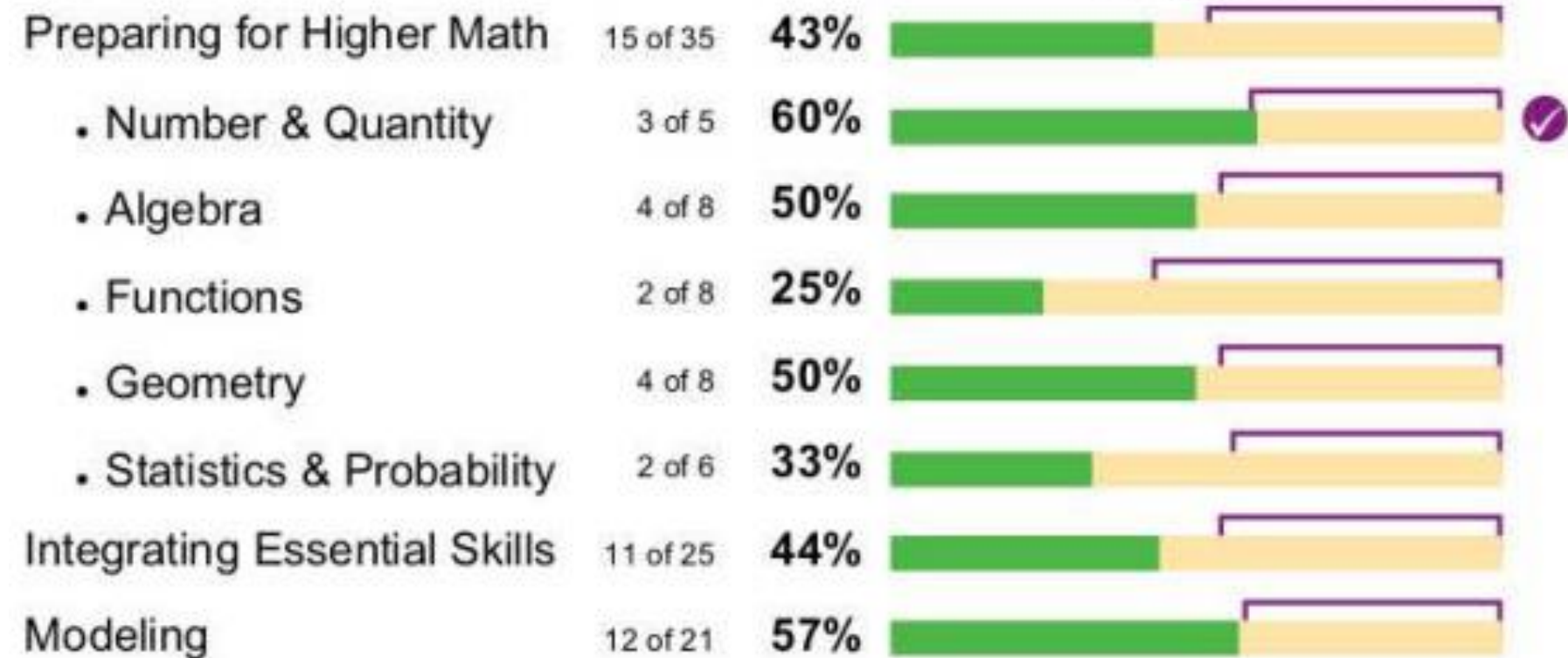




# Student Report: Detailed Results

## Detailed Results

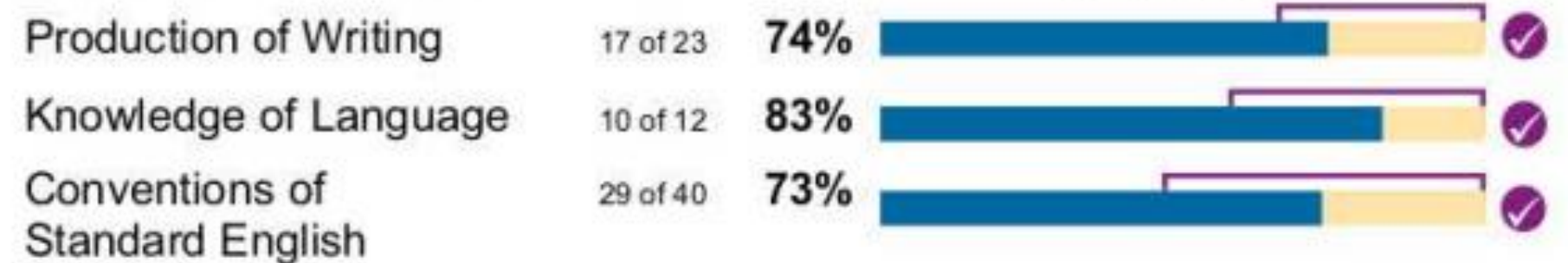
### MATH 19



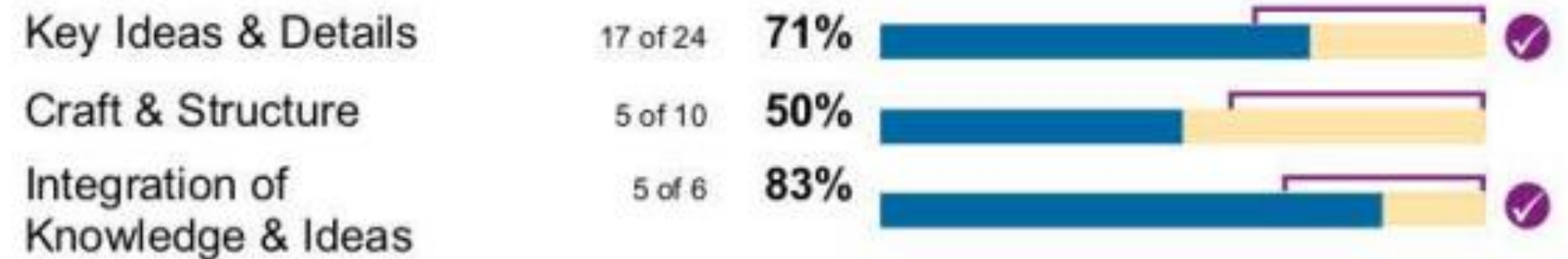
### SCIENCE 18



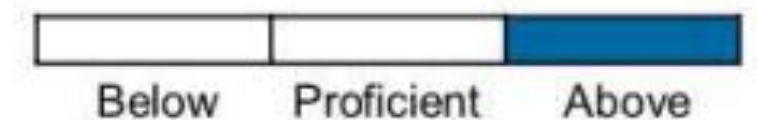
### ENGLISH 24



### READING 23



### Understanding Complex Texts



**Understanding Complex Texts:** This indicator lets you know if you are understanding the central meaning of complex texts at a level that is needed to succeed in college courses with high reading demand.

### WRITING 0

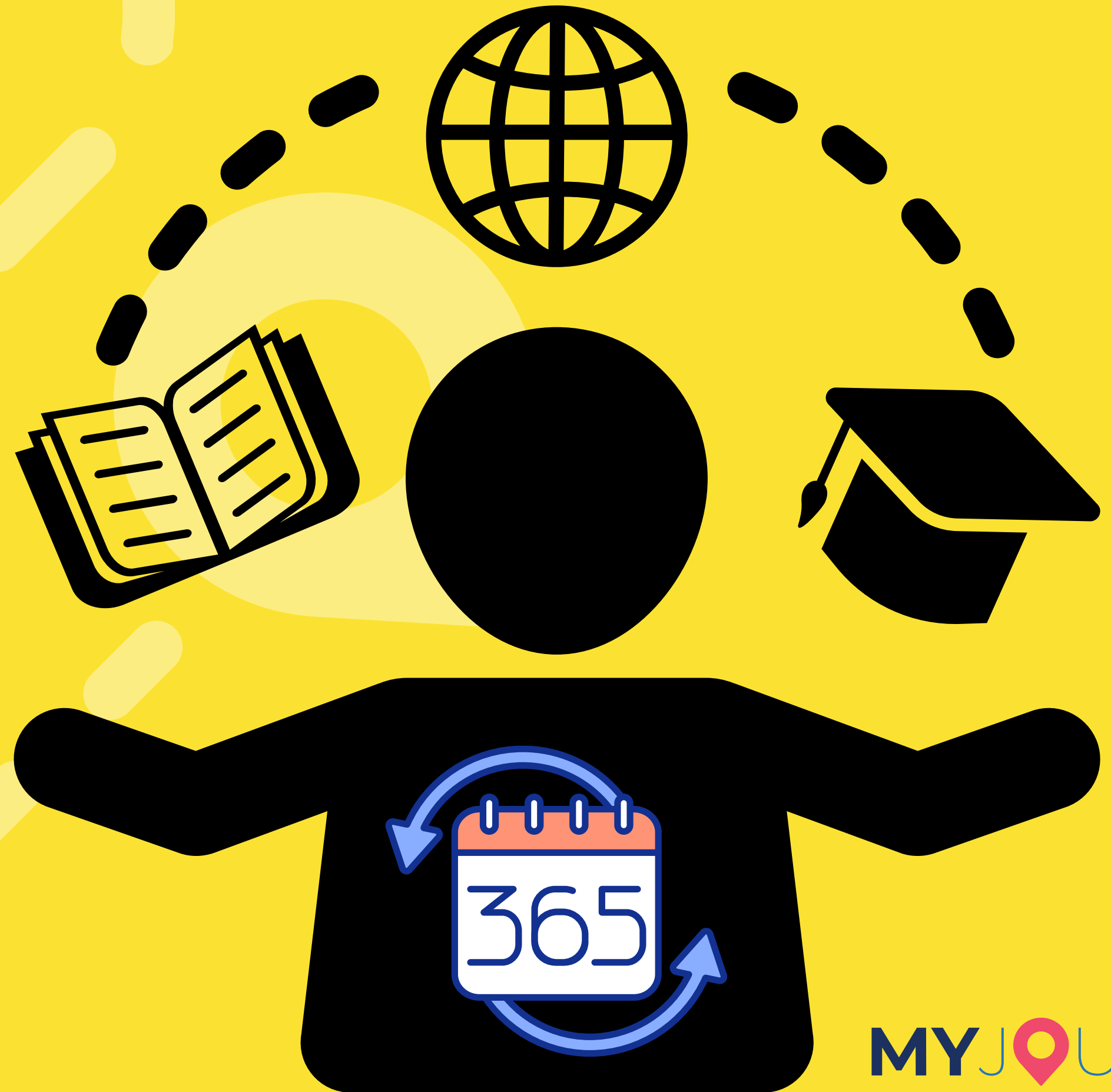
If you took the writing test, your essay was



**It's never been about a perfect score.**

# **Data Informed Practices**

**Use data from all tests and assignments to help guide personal learning plans.**



✦ What is a Math ACT Score 20-23?

---

## ALGEBRA (A)

---

# Make Learning Goals



# Test Scores Still Matter

**ACT**<sup>®</sup>

Math Benchmark

22 ✓

# Make Learning Goals

**Score Range**

**24–27**

Solve real-world problems by using first-degree equations



A book with a cover costs 24 dollars. The book cover costs 20% of the value of the book without a cover. How much is the book without a cover?

Solution:

$X$  = the cost of the book without a cover

The cover : 20% of  $X$

$$X + \frac{20}{100} X = 24$$

**Score Range**  
**20–23** ✓

Add and subtract simple algebraic expressions

**W/ MULTIPLICATION**



**Score Range**  
**16–19**

Solve one-step equations to get integer or decimal answers

**W/ FRACTIONS**



**Score Range**  
**13–15**

Solve equation in the form  $x + a = b$ , where  $a$  and  $b$  are whole numbers or decimals



# Ideas for Progress

- English
- Math
- Reading
- Science
- Writing (1-10)

Score Range 1 to 12
Score Range 13 to 15
Score Range 16 to 19
Score Range 20 to 23
Score Range 24 to 27
Score Range 28 to 32



Going from the who, what, where, when to...



distinguishing between what is most and least important in increasingly challenging texts.

# Reading



# School Centered Learning



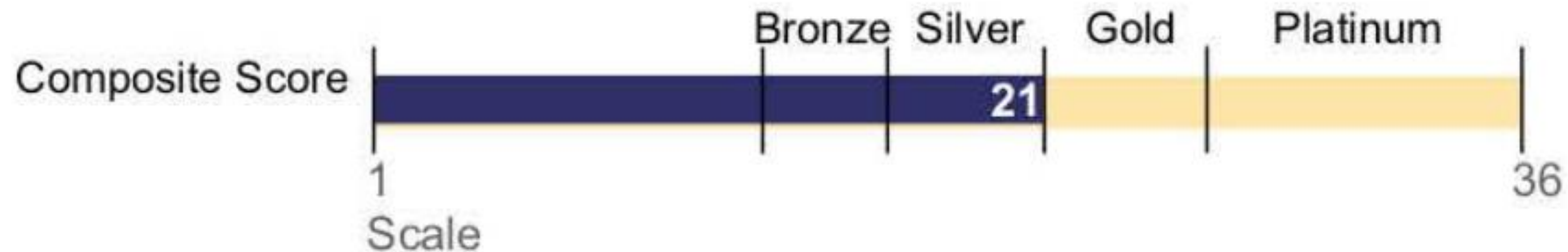
# Workplace Scenarios



# Progress Toward the ACT National Career Readiness Certificate®



This indicator provides an estimate of the ACT National Career Readiness Certificate (ACT NCRC®) that students with your ACT Composite score are likely to obtain. The ACT NCRC is an assessment-based credential that documents foundational work skills important for job success across industries and occupations. Visit [www.act.org/NCRC-indicator](http://www.act.org/NCRC-indicator) to learn more.



Students with this ACT Composite score are likely to obtain a Silver level NCRC.

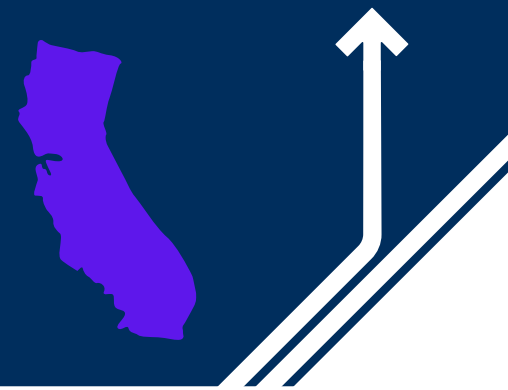
# Stackable Credentials



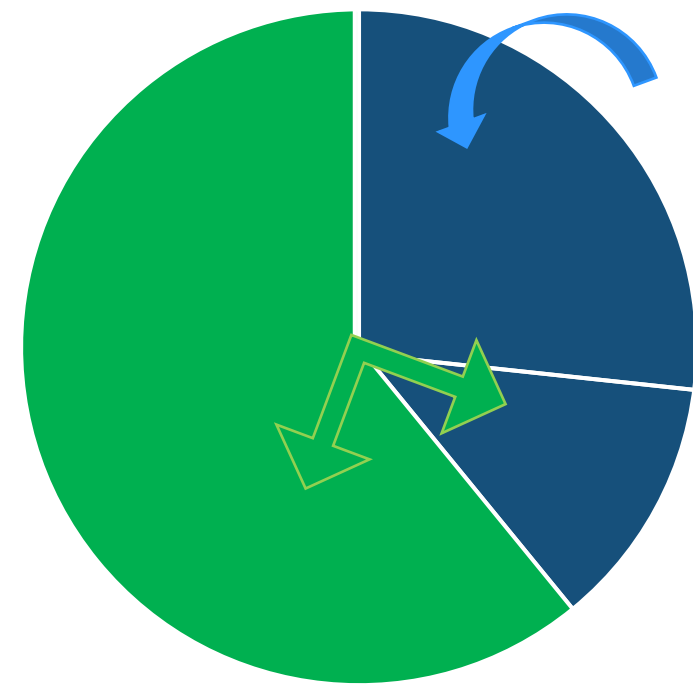
**Certify Learning**



# California's 2022 Graduating Class



**39.1% Took an AP Exam**



■ Took an AP ■ Did not Take an AP

**26.7% Scored 3 or Higher on an AP Exam**

**How do we help  
ALL STUDENTS  
Verify and Certify  
Academic and Workplace Skills?**



I Love WorkKeys!

“Helped me better understand what employers are looking for.”

-Jacob  
Merced, Ca  
February 2023



# Introducing Workplace Certifications as Part of Existing Career Exploration Program

1. School-Wide Activity/Assignment
2. MS-HS Matriculation Meetings

## Activity

# Building the Language of Work

DATE

**LEARNING  
OUTCOMES**

Background Knowledge, Vocabulary, Context Clues

Tasks and Suggestions

BEFORE  
READING

WHILE  
READING

AFTER  
READING

The receiving department just received a shipment of 15 boxes of fragile bulbs. There were 8 bulbs in each box. Unfortunately, inspection of the bulbs revealed that 11 had been damaged during shipping. How many *undamaged* bulbs were received?

109

88

120

11

23

**Correct**

First we need to determine the number of total bulbs received. We know there were 15 boxes and that each box contained 8 bulbs.

To find the total we use our calculator to get " $15 \times 8 = 120$ ".

120 total bulbs were received.

We know that 11 of these 120 bulbs were damaged. To determine the number of undamaged bulbs we use our calculator to get " $120 - 11 = 109$ ".

109 *undamaged* bulbs were received.

Applied    Level  
Math        4

The warranty repair department is responsible for troubleshooting returned items. A technician is currently troubleshooting a display that "Can't start". She confirmed that the power board output is 24 volts, and she has confirmed that the power key is under control. What should she do next?

- "Replace the main board"
- "Replace the IR board"
- "Check the IR receiver is normal?"
- "Replace the key board"

"Replace the key board"

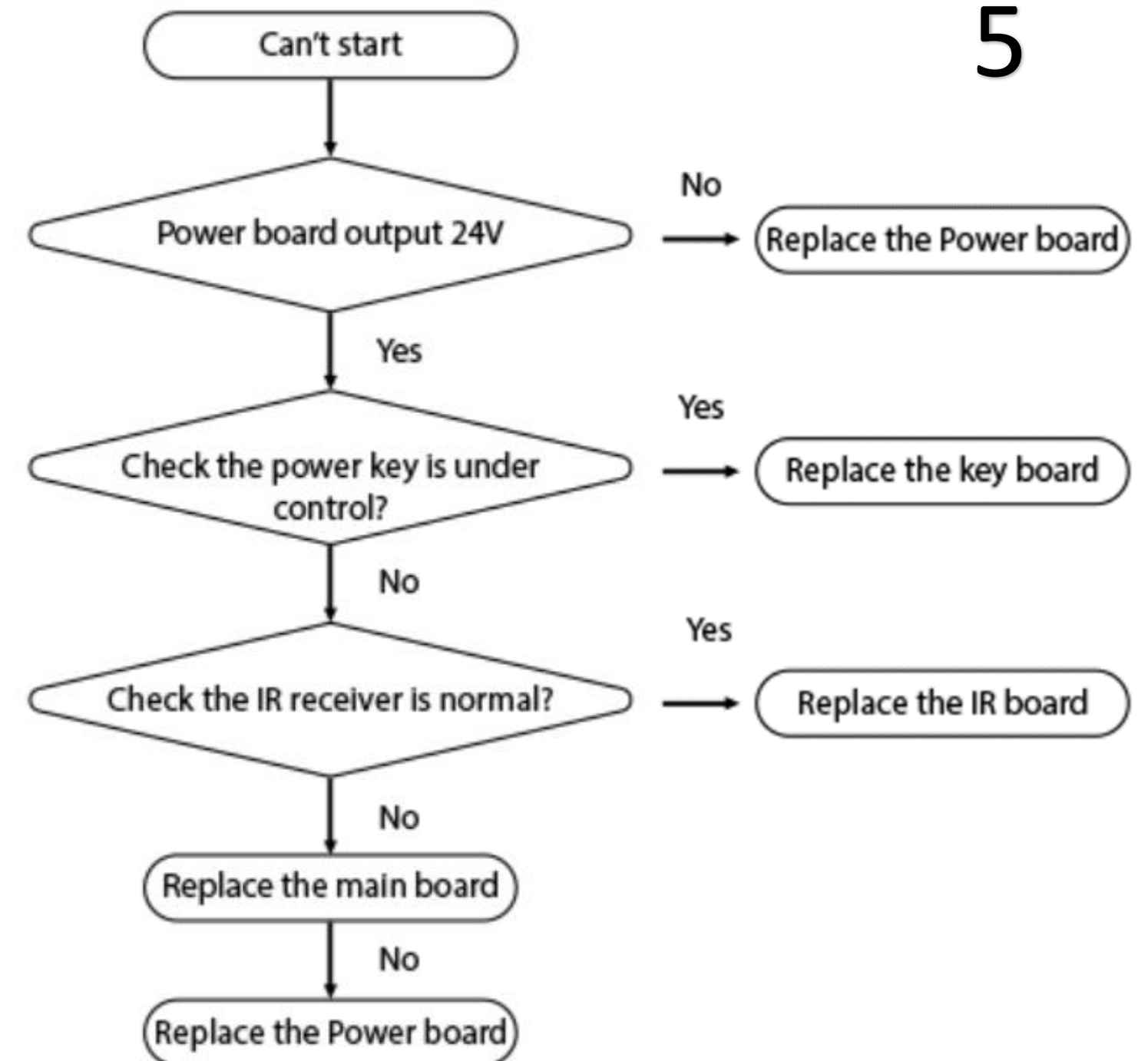
**Correct**

Since the "power board output is 24 volts", we follow "Yes" to the "Check the power key is under control?" decision block. We are told that she "confirmed that the power key is under control", so we follow the "Yes". She should "Replace the key board".

# Graphic Literacy

## Level 5

### 2. Can't start



## Play Hard Dog Daycare

### Revised Schedule

When dogs arrive between 7 and 8 a.m., they should be taken immediately to their preselected warm-up groups. Group A dogs are high energy and should go to the large indoor play area at the southern end of the facility. Group B dogs include puppies, shy dogs, and older dogs, and they play in our large indoor area at the northern end. Our new warm-up group time ends at 10 a.m. rather than 9 a.m. so dogs will spend more time with their preselected warm-up groups.

From 10 a.m. to 12 p.m. pack playgroups go to their respective areas of the facility. The groups and staff are set up by staff leaders prior to the day's activities with dogs being grouped according to temperament and engagement level. The play groups are held in the two large indoor areas, the three smaller indoor areas, and occasionally in the outdoor area if our numbers are at maximum capacity for the day.

Crated rest time is from 12 p.m. to 2 p.m. From 2 to 3:30 p.m. group play takes place again. The groups and locations are the same as the warm-up session. Starting at 3:30 p.m. each dog has an individualized rest, feeding, and play schedule based on pickup time.

As in the past, watch for signs of trouble of both the submissive and active nature. Separate the dogs in question, or allow those wanting to avoid conflict who show threat-reduction signals to rest in our crate-comfort room along with any dogs that may need "break time" due to overstimulation.



13. You work at Play Hard Dog Daycare. According to the document shown, you should put a puppy that arrives at 8 a.m. in the:

- A. crate-comfort room.
- B. large, northern indoor play area.
- C. outdoor play area.
- D. large, southern indoor play area.
- E. small indoor play area.

14. You work at Play Hard Dog Daycare and receive the following message:

Two trainers plan to work in the afternoon with some dogs in the small indoor areas. Please follow the revised Saturday schedule when dogs complete training.

Based on the document and message shown, if a shy dog finishes a training session at 1:30 p.m., you should take her to:

- F. join Group A.
- G. join Group B.
- H. play in a small indoor area.
- J. rest in her crate.
- K. work with her second trainer.

Workplace Documents      Level 5

- Measures skills relevant to **any occupation, at any level, and across industries**



1. **Applied Math**
2. **Graphic Literacy**
3. **Workplace Documents**

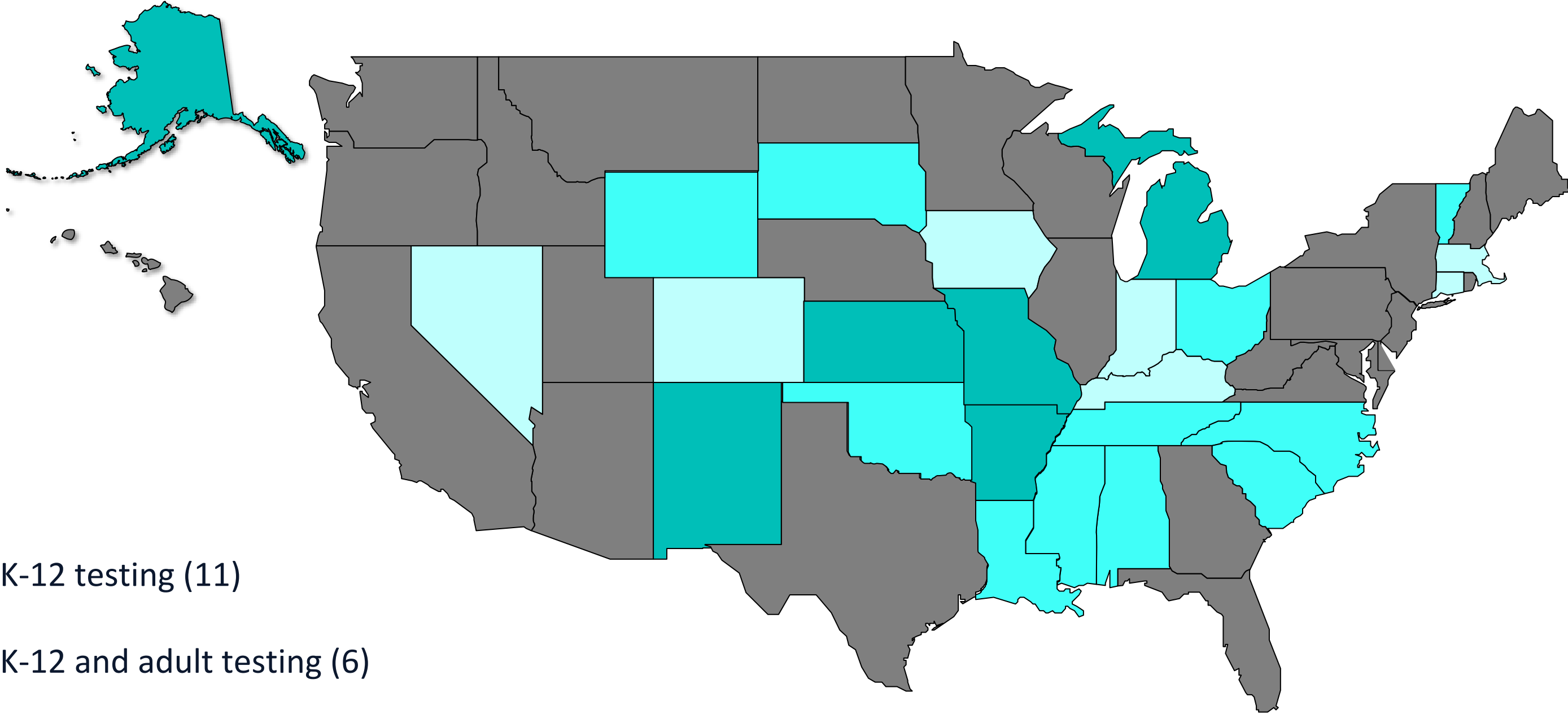
Available in English & Spanish

Applied Technology  
Business Writing  
Workplace Observation  
Fit and Talent

- Web-based and available in paper, about one hour long



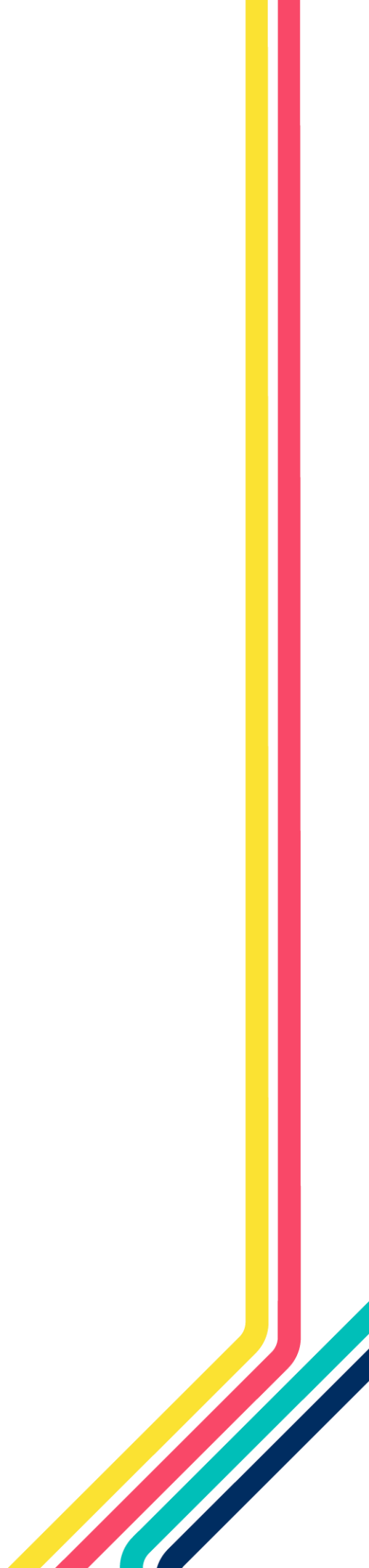
# 2022-2023 States Administering WorkKeys Testing



State K-12 testing (11)

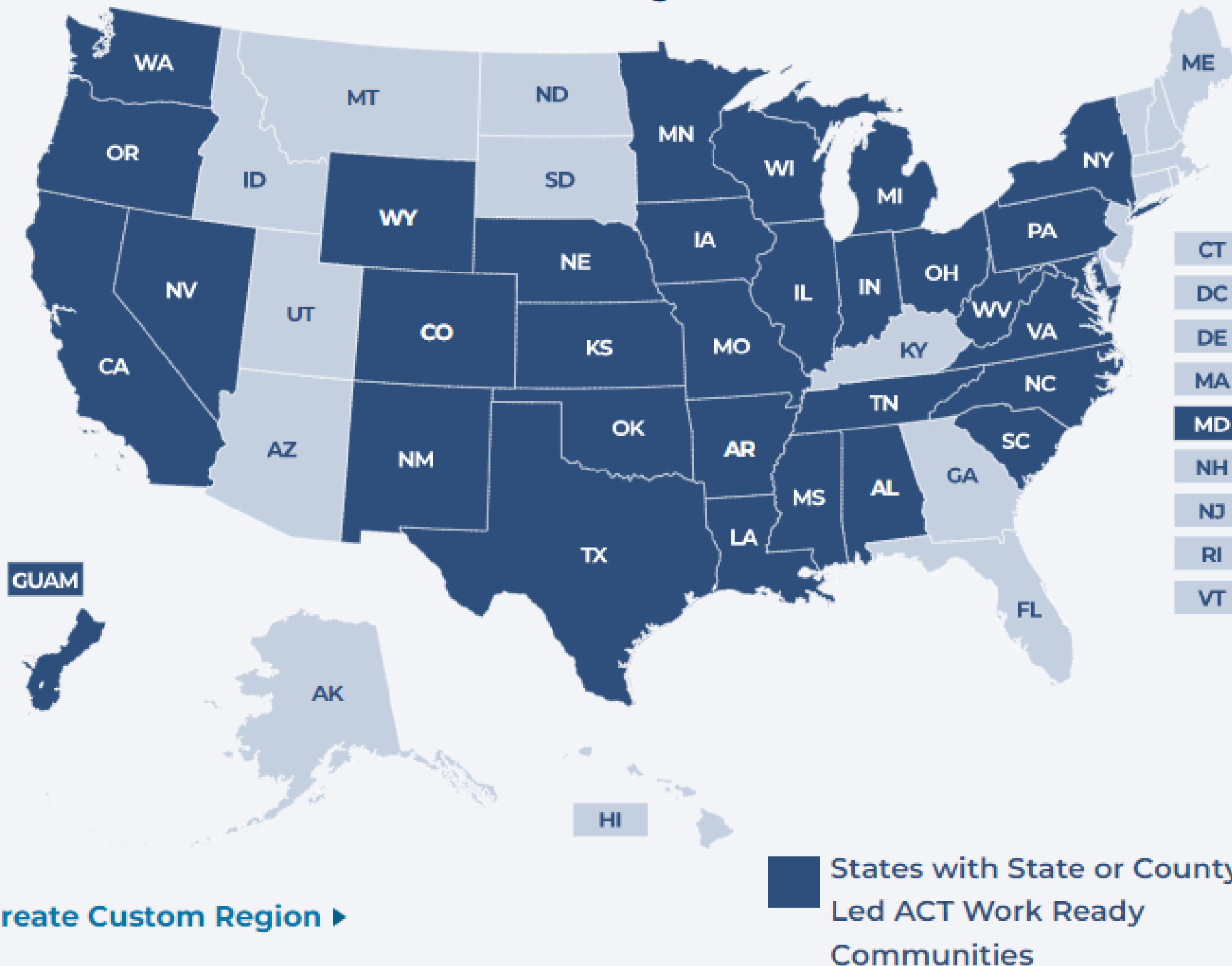
State K-12 and adult testing (6)

State adult testing (7)





## States with State- or County-Led ACT® Work Ready Communities



**Total ACT® WorkKeys® National Career Readiness Certificates®**  
**5,837,842<sup>o</sup>**

### ACT WorkKeys NCRC Levels:

Platinum:	233,006
Gold:	1,208,604
Silver:	2,936,494
Bronze:	1,459,738

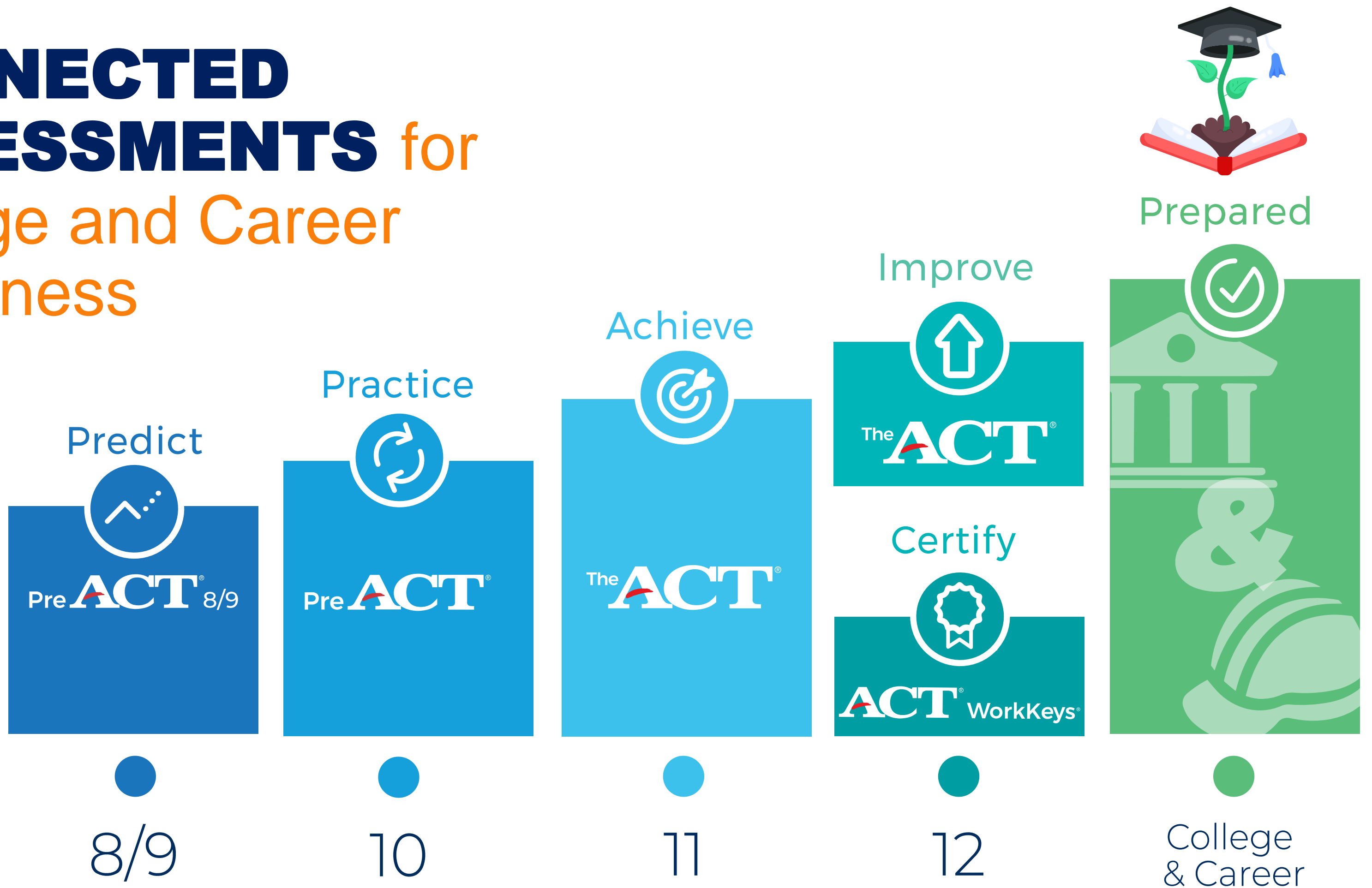
Participating Communities:	555
Employers Supporting:	28,566
Job Profiles:	22,669

# Powerful Results for Employers

**ACT**® Work Ready  
Communities



# CONNECTED ASSESSMENTS for College and Career Readiness





# POST SECONDARY PLANNING TIPS

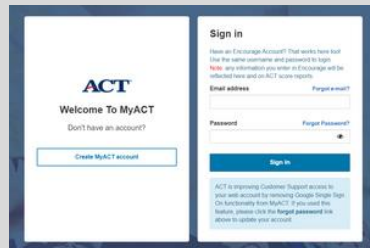
## What will you study after high school?

Being undecided about selecting a major and career is understandable. There are a lot of options out there! Use the tips below to help you explore some future options. Have fun!

### 1 STAY CURIOUS

- Ask interesting adults about their job.
- Ask yourself, "Can I see myself working there?"
- Try out new activities and electives.

Create a Profile on MyACT.org



### 4 RESEARCH

Visit [JobProfiles.ACT.org](http://JobProfiles.ACT.org) to research the skills needed for over 1,000 different occupations.



### 2 KNOW YOUR SKILLS

Take MyACT online practice tests to identify crucial skills needed to succeed in college classes and work training programs. Study your responses and spend time sharpening your skills.



Test Foundational Workplace Skills

### 3 KNOW YOURSELF

Do you prefer to work with ideas, people, things, or data? Visit [MyACT.org](http://MyACT.org) and take three free career inventories to find out!

### 5 START A RESUME

When you ask your teachers and mentors for a letter of recommendation, ask them to review your resume and to share their feedback.





## Enhance Career Exploration

### Welcome to ACT Registration!

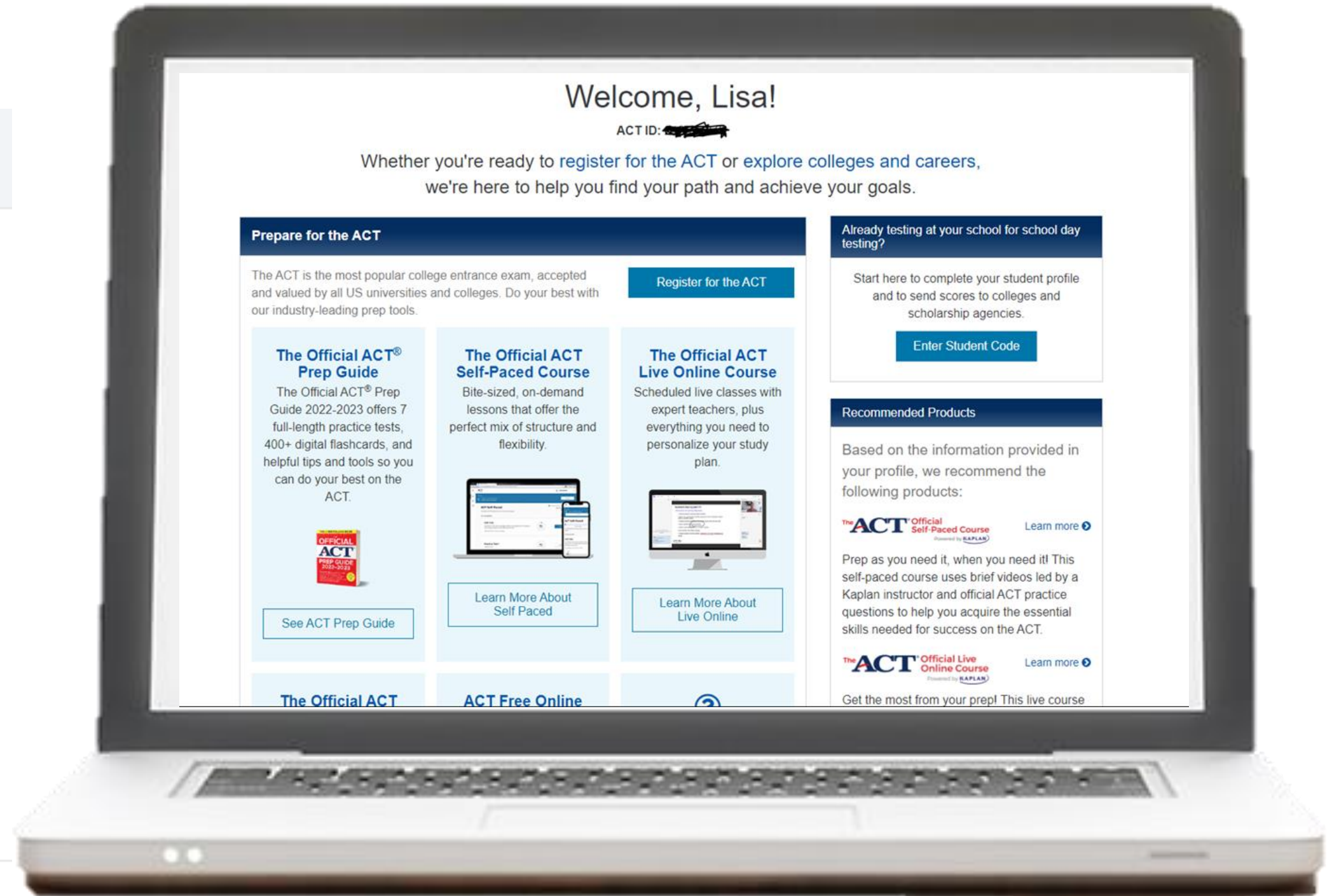
As you'll see, we are more than just a test, and you are more than just a score. Our world-class research is designed to help you on your path to education and workplace success.

#### Here is what you will need to register:

- About 30 minutes
- Credit card, voucher, or fee waiver
- Your high school grades and courses (optional)
- Your photo (or upload it later)

[Begin Registering](#)

# MyACT.org



## Discover majors and occupations that fit your interests

[Introduction](#)[Interest Inventory](#)[Abilities Inventory](#)[Values Inventory](#)[Inventory FAQ](#)

Interest Inventory item 72 of 72

### Watch for forest fires

**Dislike** - I would dislike doing this activity

**Indifferent** - I don't care one way or the other

**Like** - I would like doing this activity

[← Previous](#)

## Estimated Salary

### Economic Research Institute (survey of salaries in 2015)

	National		State Comparison	California	
	\$ per year	\$ per hour		\$ per year	\$ per hour
Starting Salary	66,000	31.75		63,000	30.25
Average Salary	94,500	45.50		96,500	46.25
Salary with Experience	131,000	63.00		139,500	67.00

National average for all occupations included in this survey: \$59,000/year or \$28.25/hour

### U.S. Bureau of Labor Statistics (survey of salaries in 2014)

	National		State Comparison	California	
	\$ per year	\$ per hour		\$ per year	\$ per hour
Average Salary	77,500	37.25		87,000	41.75

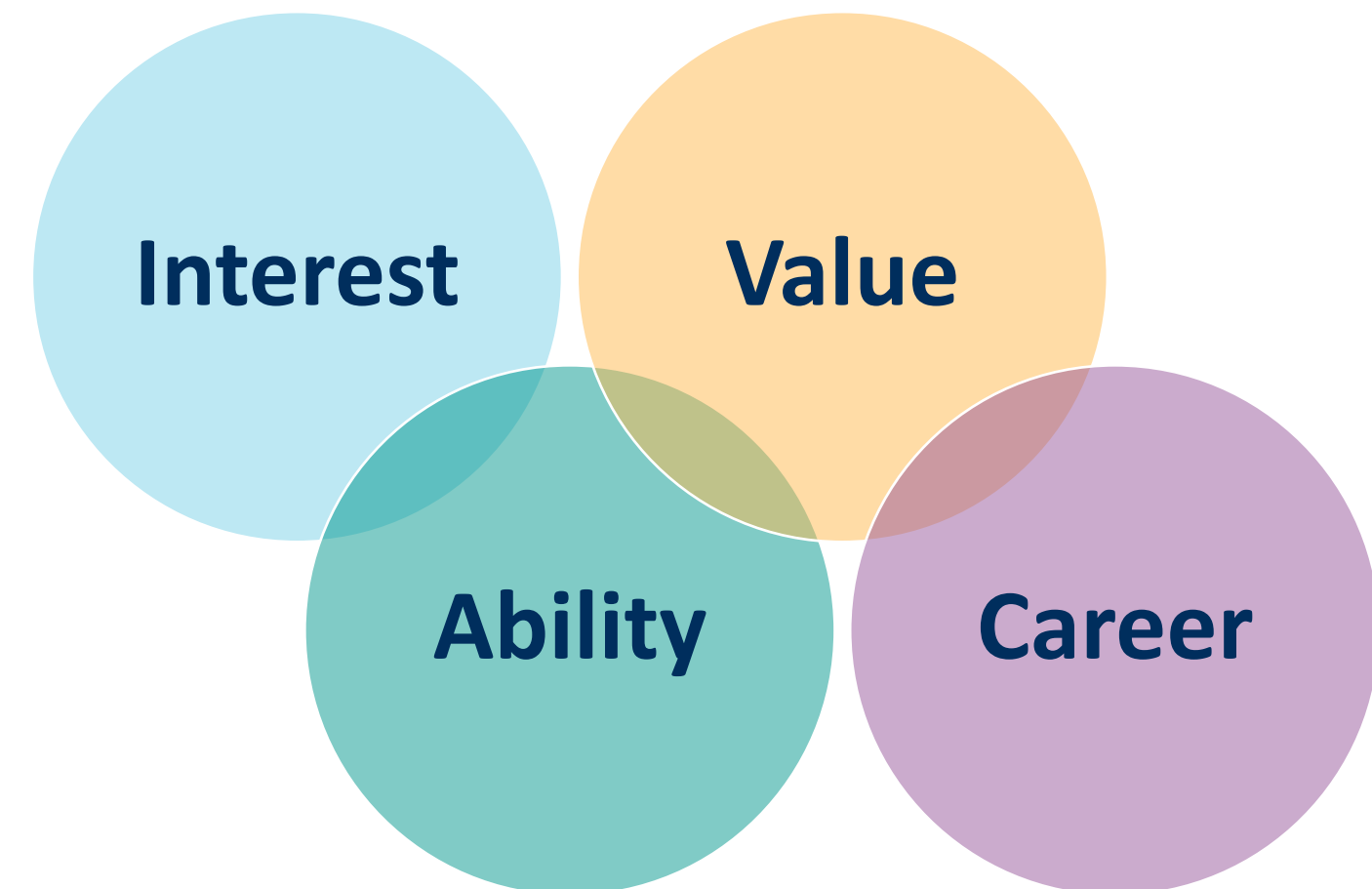
National average for all occupations included in this survey: \$48,000 /year or \$23.00/hour

According to the National Association of Colleges and Employers, average salaries offered beginning Computer Programmers with a bachelor's degree were about \$66,000 per year (\$31.75/hour) in 2015. Computer programmers employed in the professional and commercial equipment and supplies industry had the highest earnings with applications development programmers earning the most.

# MyACT Non-Test Questions

Questions that are not part of the test itself

- Inventories for college and career planning: **Interest, Value, Ability, and Career**
- Registration and demographic information (for state and district testing students)
- Colleges or scholarship agencies where students want their test scores sent



- Visible by schools, parents, and students have visibility via **myactprofile.com**



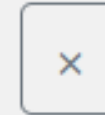
**Occupational Profile Search**

(The occupational profiles represent local job profiles combined by O\*NET number.)

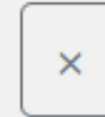
Job Title / Code:



Career Cluster:



Job Description:



**Show only:**

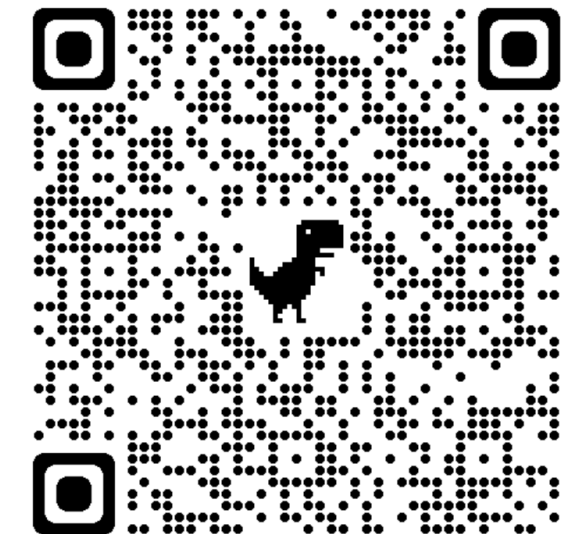
**Bright Outlook**

Search by **Your Skill Levels**

**Search Results (1016)**

O*Net Code	Title	Career Cluster	Special
11-1011.00	Chief Executives	Business Management & Administration	
11-1011.03	Chief Sustainability Officers	Business Management & Administration	
11-1021.00	General and Operations Managers	Business Management & Administration	

**User Guide & Activity**



# Wages & Employment Trends

Median wage data for **Market Research Analysts and Marketing Specialists**.

Employment data for **Market Research Analysts and Marketing Specialists**.

Industry data for **Market Research Analysts and Marketing Specialists**.

<b>Median wages</b> (2022)	\$32.80 hourly, \$68,230 annual
<b>State wages</b>	California <input type="button" value="Go"/>
<b>Local wages</b>	ZIP Code <input type="button" value="Go"/>
<b>Employment</b> (2021)	792,500 employees
<b>Projected growth</b> (2021-2031)	■ ■ ■ ■ Much faster than average (11% or higher)
<b>Projected job openings</b> (2021-2031)	99,800
<b>State trends</b>	California <input type="button" value="Go"/>
<b>Top industries</b> (2021)	<a href="#">Professional, Scientific, and Technical Services</a> <a href="#">Finance and Insurance</a>



Maximize  
Use of Open  
Resources

Source: [2021-2031 employment projections external site](#).

# Supporting Education & Workplace Success

## Skills Check for Grades 8-12

1.  [My ACT.org](https://my.act.org)
2. Take Career Inventories
3. ✓ Academic Knowledge w/ [the Question of the Day](#)
4. Analyze **FREE** Practice Test Results
5. Research Majors and Careers
6. Review Workplace Skills: [WorkKeys.org](https://workkeys.org)

**The goal is not a perfect score...  
it's to continue learning!**

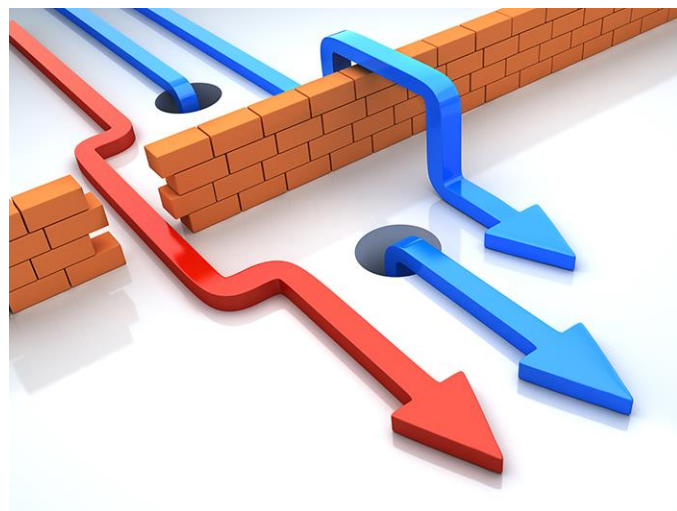
**School Wide  
College & Career  
Readiness Activities**

# Facilitating Opportunities



# Best Practices: Support Data Informed Practices for Students

- Early Readiness: Take an objective measure of readiness at the end of MS/beginning of HS to identify learning opportunities and gaps.



- Increase Access: Offer assessments that benefit students after HS graduation and lead to credentials/certifications.



How are some of California's most popular colleges using the ACT?

- ✓ Part of admission application
- ✓ Course placement after enrollment



# OPTIONS

**ACT National Testing (Saturday)**

**ACT State & District Testing (weekday)**

Students register through MyACT

Organization registers students

7

4

Testing Date Options

Testing Date Options

**National Test Center**



**National Test Center**



**Unlisted/Unpaid Test Center**



**State Testing**



**District Testing**



**School Testing**

FRL% Tier Pricing

[TestACT@ACT.org](mailto:TestACT@ACT.org)

## Measure Readiness

ACT Testing Free and Reduced Lunch Program (FRLP) Discount Pricing

### FEE WAIVERS



Basic registration and late fees for up to 4 National ACT Tests  
PLUS  
Free access to the Official Self-Paced Course, Powered by Kaplan®

[ACTDistrictTesting@ACT.org](mailto:ACTDistrictTesting@ACT.org)

Paper, Online, or Both

©2021 by ACT, Inc

Register online at [act.org/bts](http://act.org/bts)




# FREE STUDENT RESOURCES

ACT Test Prep Guide  
Practice Questions  
Online Test Prep Events  
Sample Classes



**Verify & Certify**  
**Academic Skills**

Grades 11 & 12

**Use ACT Fee Waivers to Register** 

Test Date	Deadline
April 13	March 8
June 8	May 3
July 13	June 7

Students Ages 11 & Up  
Create a **MyACT.org** Student Profile

Subject	ACT Benchmark
English	18
Math	22
Reading	22
Science	23
ELA	20
STEM	26

**Score Range 1-36**

Meeting or exceeding ACT Benchmarks empirically indicates post-secondary readiness.



## Use ACT Scores in Your Resumé Section: Skills

- Academically Proficient
- Verifiably College-Ready





**NCRC is awarded at 4 levels**



**Skill Level**

16% of Jobs

67% of Jobs

93% of Jobs

99% of jobs

**Certificates awarded**

Level 3 Score on each assessment

Level 4 Score on each assessment

Level 5 Score on each assessment

Level 6 or 7 Score on each assessment

**Sample Occupation Correlation**

- Construction Equipment Operator
- Veterinary Assistant
- Welder
- Pharmacy Aid
- EMT

- Human Resource Manager
- Head Cook
- Medical Assistant
- Kindergarten Teacher
- Aircraft Mechanic
- Radiologist Technician

- Pharmacy Technician
- Speech Language Pathologist
- Accountant
- Ship Captain
- Climate Change Analyst
- School Counselor

- Airline Pilot
- Fuel Cell Engineer
- Mechanical Engineers
- Physicists

# Work Readiness

- If students are going to be adequately prepared for the workforce, they need to understand the requirements for jobs they are considering.
- WorkKeys helps students determine the skill levels and education required for various jobs.

	Welder	Solar Technician	Web Developer
Salary	\$21/hr	\$27/hr	\$37/hr
<b>WorkKeys Skills:</b>			
Math	3	4	5
Workplace Documents	3	4	5
Graphic Literacy	4	4	6

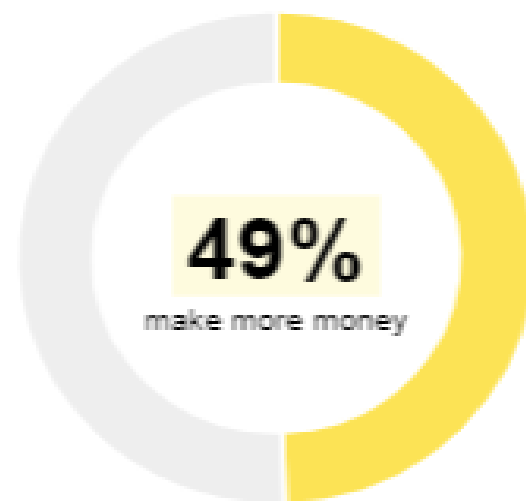




# What are people saying about the ACT WorkKeys National Career Readiness Certificate (NCRC)?

**\$ Did this certification help you make more money?**

Based on 5,454 responses



49% said earning their ACT WorkKeys National Career Readiness Certificate (NCRC) helped them **make more money**

**👜 Did this certification help you get a job?**

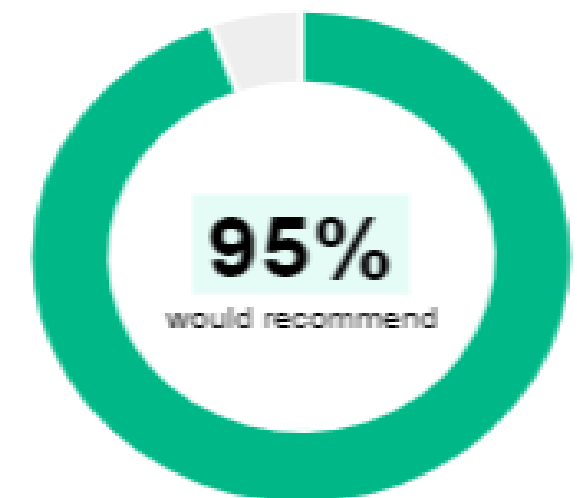
Based on 5,454 responses



61% said earning their ACT WorkKeys National Career Readiness Certificate (NCRC) helped them **get a job**

**👍 Would you recommend this certification?**

Based on 5,455 responses



95% said they **would recommend** a family member or friend earn their ACT WorkKeys National Career Readiness Certificate (NCRC)

# Assessment OPTIONS

Assessments	Grade
The ACT or the ACT with Writing	11 and 12
PreACT	10
PreACT 8/9	8 and 9
ACT WorkKeys	8 through Adult

## Test Administration Modes

- Paper/Pencil
- Online Testing
- Mixed Mode

## Test Dates

### ACT Testing

- Fall Testing only---or
- Spring Testing only---or
- Both Fall and one Spring test date
- National Saturday Testing

### PreACT 8/9 & PreACT

- September 1 – June 1

### WorkKeys Testing & Curriculum

- Year Round



# College & Career Readiness Tools

## Helping People Achieve Education & Workplace Success



**ACT College and Career Readiness Benchmarks**



**ACT Research Publications**



**Ideas for Progress in College and Career Readiness**



**ACT College and Career Readiness Standards**



**ACT Insights Infographic**



**ACT Resources for K12 Professionals**



**ACT Data Visualization Tools**



**ACT Comprehensive Assessment Planner**



**ACT Holistic Framework**



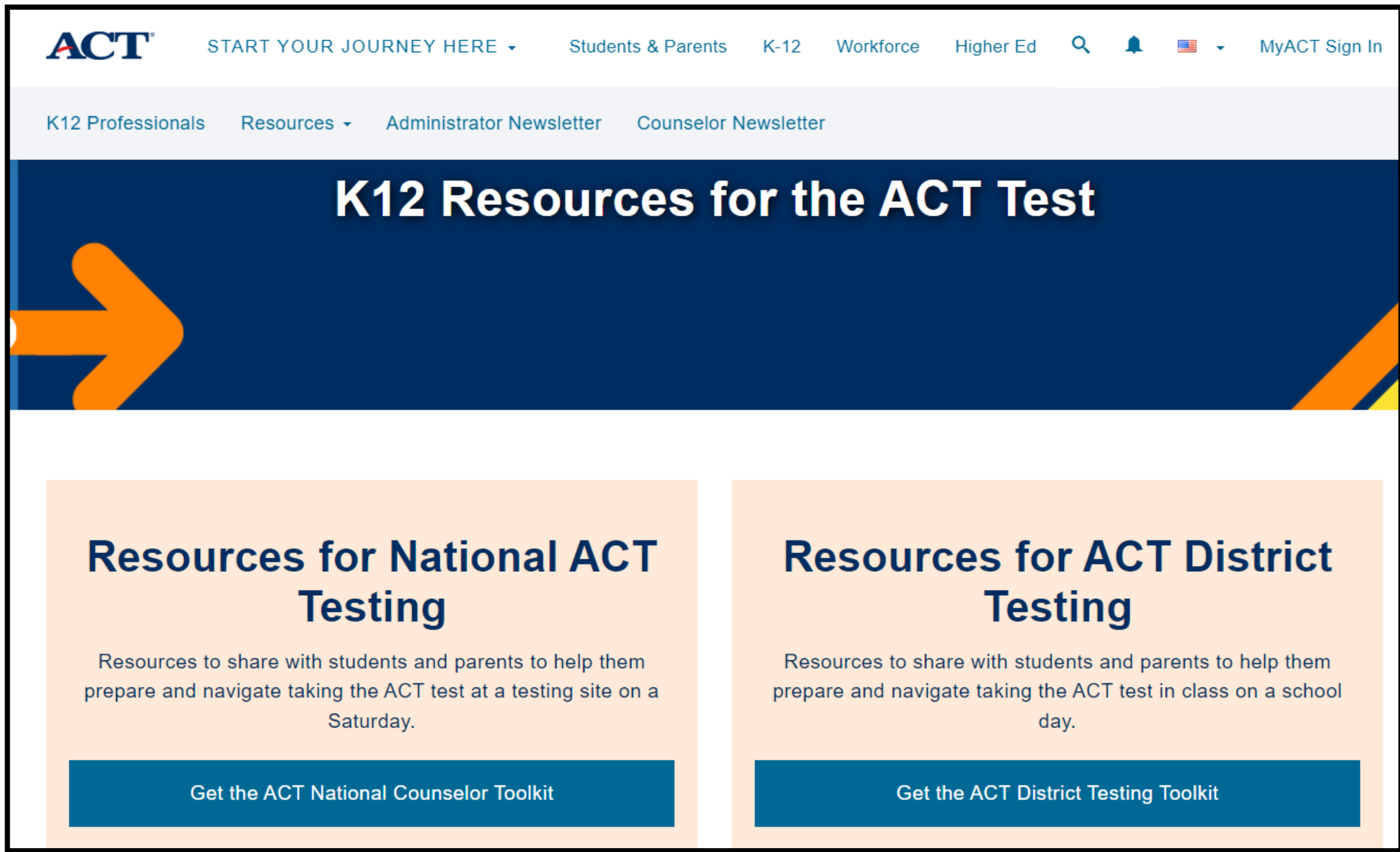
**ACT Counselor Toolkit**



**ACT Curriculum Worksheets**



**Mosaic SEL Resources**



## TOOLKITS

- Printable resources including test date flyers and posters
- A comprehensive Counselor Guide
- On-demand webinars for educators and students
- Recognition Toolkits to celebrate student success

<https://www.act.org/content/act/en/k12-educators-and-administrators/administrator-resources/the-act.html>

QR code to  
Counselor Toolkit



... and more to come throughout the year!

**Beyond**  
**Test Prep &**  
**College Admissions**

**To**

**Creating Pathways for**  
**College & Careers**

We are grateful for your help  
guiding students to and  
through the goals and paths  
that lead to their success.

**ACT**<sup>®</sup>

*Thank you* for helping us  
achieve our mission of success  
and equity in education.

Helping people achieve education and workplace success.

